

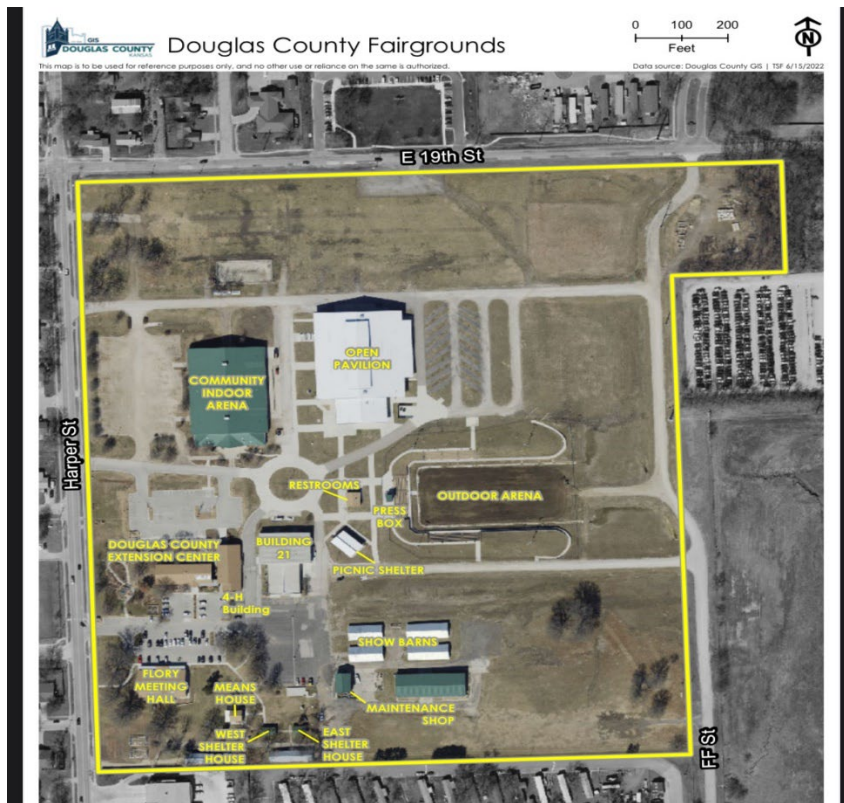
Welcome to Livin' Large In Lawrence

We are looking forward to a great week. Please note the following items that we feel will make your time at the Miniature Hereford Junior Nationals Association, Livin Large in Lawrence, much easier! This is not a list of rules; please refer to the 2024 MHJNA Rules for General, Show, and Contest Rules.

We are guests at this facility, and the supporters of MHJNA have successfully raised funds to accommodate everyone as best as possible. We have tried to limit your out-of-pocket expenses and received great support from many sponsors. You can do a few things to help that cost nothing; make sure you do not destroy any property; if you would not do it at home, please do not do it at Douglas County Fairgrounds. **Clean up your own area. We are the janitorial staff!**

Facility Address:

2110 Harper St, Lawrence, KS 66046



Community Indoor Arena = Show Ring

Open Pavilion = Stalling

Building 21 = Food and AC

Arrival

- Monday, June 17th exhibitors may arrive. Stalling barn and tie-outs will be open 24 hours/day.
- All cattle must be in place by Tuesday, June 18th at 8 am.
- Barn access should flow quickly, as we will have multiple lanes to move into the stalling barn and tie-outs. Please do NOT leave your trailer parked in or along the barn while you set up your stall, unload, and park. Please unload, park and then set up your stall.
- Trailer parking is available at the NW corner of the grounds. Harper & 19th.

Departure

- Release will be after the Premier Exhibitor's announcement at the show's end on Saturday, June 22nd. Barns must be empty by noon on Sunday, June 23rd.
- Please make sure you clean your areas in the barn and tie-outs before you leave; no trash, please. Please pull your bedding back from the tie-out rail in the tie-out area, allowing for quicker clean-up.
- Exhibitors can depart after the show on Friday and Saturday but would prefer no loading during the show. Please be respectful of those who are still fitting and showing.

Health:

- All animals require a health paper to be checked during check-in.
- Health Certificate within 30 days
- Official USDA ID is required.
- You may list multiple animals on one health paper.
- Kansas residents will be required to provide a health paper at check-in.

Cattle check-in:

- Tuesday June 18 @ 9:30.
- Tattoos will be verified. Double-check before you leave home!
- Steers will be weighed; this information will be used for breaking classes.
Health papers will be presented during check-in time. All animals must be in good health to show! Kansas cattle will require health papers.

Supplies:

- Weaver & Sullivan's Show Supply will be onsite daily.
- Tractor Supply, Bomgaars and Lawrence Farm & Feed are local options for feed & bedding.

Tie-Outs:



- Tie-out areas will be on a first-come, first-served basis. There are two options for tie-outs.
 1. There is an enclosed tie-out area with tie rings and rail. This area has a gated perimeter fence, which will be assigned based on 1st come basis.
 2. Pens can be built in the grassy area around the tie-outs. You cannot attach panels to the fenced-in area to build a pen. You can attach it to your trailer; there is ample space to park your trailer in the grass. You are responsible for providing your own panels to build your pen; nothing will be provided.
 - **This area does not have a perimeter fence, and it is near a street and neighborhood. Exhibitors assume all risks for loose animals.**
- Tie-out bedding will not be provided; please bring your own.
- NO PANELS WILL BE PROVIDED FOR PENS IN TIE OUTS. Bring your own.
- There is NOT a water hydrant in the tie out area.
- After the event, we ask that you pull your bedding back from the tie rail to allow for easier cleanup \$. You are responsible for picking up trash in your tie-out, stalling, and fitting area.

Indoor Stalling:



- **** Bedding in the barns will be provided!!!!**** The bedding will be wood chips. You can top dress your area, but you must supply your own additional bedding. No straw in the barn.
- We will do our best to provide adequate space for each calf. We are allocating 3 ½' to 4' per head.
- Your tack space will be near your designated stalling area. There will be adequate space for both cattle and tack. There will be plenty of space to set up chutes and tack around the perimeter of the stalling area and directly behind your stalls. Please be considerate of your neighbors.
- Stalling assignments will be provided for each exhibitor upon arrival. We will do our best to accommodate all requests.
- You are expected to stall in your assigned area.
- **PORTA COOLERS WILL BE ALLOWED IN THE BARN!** However, they will not be a priority for outlets, so plan to RUN OFF OF YOUR GENERATOR.

Manure:

Manure should be placed in the designated blue container. The facility has ample wheelbarrows, which you can roll in and dump. You are responsible for cleaning up your own manure and trash!



Electricity:

- All fans, extension cords, and electrical equipment must have a ground, safe wiring, and safe working conditions. Double-check **your equipment before you arrive at the show!**
- Generators are recommended and must be kept outside of the barn. Please be a good neighbor and do NOT monopolize the barn outlets. Ideally, outlets run fans, and generators run blowers briefly throughout the day.
- Keep the electrical boxes clear! NO feed, hay, show boxes, etc. will be allowed in front of electrical boxes, including electrical outlets on the outside walls.

Wash Racks:



- Keeping them clean is our job, please do your part.
- There is a very large wash rack outside between the stalling barn & show ring.
- Indoor wash racks are available in Indoor arena (Show Barn).
- There is a wash rack in the stalling barn, but we cannot use it; please do not try to use that wash rack.

Participant Info:

- Exhibitors' check-in will be Tuesday, June 18th, at 9 a.m. Information packets, swag, and T-shirts will be passed out during check-in.
- All cattle shows are full fit. Showmanship is non-fit.
- Exhibitors must wear their T-shirts for the group photo and Showmanship on Thursday, June 20th. They will meet at 8:15 a.m. in the show ring for the group picture.
- Silent & Live Auction items can be checked in on Tuesday @ 2:00. We encourage you to bring an item to donate, as this has historically been a great fundraiser for the MHJNA. Silent Auction will close on Friday afternoon and can be picked up at the banquet.
- We will have an Exhibitor Informational session on Tuesday at 8:30. During this time, we will review the week's logistics, provide contest information, and answer questions. This is a great opportunity for newcomers and seasoned exhibitors to get familiar with the event. It will be held on the south end of the stalling barn. (same end as restrooms)

- Contests in general—Please read the MHJNA 2024 Rules for each contest to ensure you understand the requirements. If you have questions, please ask. We encourage all exhibitors to participate in the contests. If you didn't sign up at entry time, you can still participate by contacting us at Contact@MHJN.org or at exhibitor check-in. Exhibitors' check-in will be the final opportunity to enter contests.
- Arts & Crafts check-in will be Tuesday at 2:00 pm in Building 21 Center. Please be sure to have your Statement of Originality with you at check-in.
- Fitting team assignments will be completed at the event on Tuesday, 6/18, at 1:00 pm in the stalling barn at the south end (the same end as the restrooms). All teams will be randomly selected. Barn attire is appropriate for the fitting contest, although you might want your showman dressed in show attire.
- Showmanship is a no-fit, no-adhesive, blow-and-go contest format. Classes will be posted at the event, and the Livin Large in Lawrence T-shirts will be worn for Showmanship.
- Photography All photos must be mounted on 11"x 14" foam core or gator board that is at least 1/8" thick.
- Judging Contest, the pre-Jrs will have scribes to help them complete the cards. Jr, Int & Sr can ask for assistance if needed.

Dress Code:

- All Showmanship participants will wear T-shirts on Thursday, and they will be needed for the group picture of all exhibitors on Thursday at 8:15 in the show ring.
- Show attire is appropriate for Speech & Sales Talk, Show days, and designated fitting exhibitors.
- All other activities are casual. We recommend an extra set of clothes as there is a high probability of getting wet—water fights have been known to occur without warning!
- Appropriate footwear should be worn during all activities.

Food: Provided by MHJNA – Free will donations accepted!!

- Lunches will be provided Tuesday – Saturday, free will offering.
- Dinner will be provided at the opening ceremonies on Tuesday night: brisket, cheesy potatoes, green beans, a roll, and apple crisp.
- The Banquet Meal on Friday featured smothered breaded pork tenderloin served with seasonal green salad, homemade rolls, homestyle mashed potatoes, Vic's special mac' n cheese, and green beans, finished with country-style gravy.
- Outside food can be brought into the barn.
- Hospitality will be provided; this will include light snacks & drinks. Thank you!

Questions

- Please feel free to contact any Board member if you have questions.

Shelley White President	641-777-8822	Chase Beratto	405-385-1082
Bryan Ivy, Vice President	214-317-9039	Cherri Lashley	308-340-4048
Beverly Dale, Treasurer	972-743-5870	Haley Berend	209-224-4616
Paula Carter, Secretary	641-799-0394	Jacqui Bertrem	405-834-9163
Stephen McIntyre	308-830-9701	John Bertrem	405-205-8205
Ashley Junis	641-680-4843	Holly Schafer	918-960-1752
Jeff Bash	308-991-0903	Shelby Hogan	979-204-9923
Brenda Streeter	515-205-6142	Chad Oats	940-399-8100
Ryan Streeter	641-414-4190	Teryn Blessin	402-937-3724
Molly Yeary	806-281-4644		